

NINJA™

BL450SM
Series

OWNER'S GUIDE



www.ninjakitchen.sg | www.ninjakitchen.my

IMPORTANT SAFEGUARDS

HOUSEHOLD USE ONLY • READ ALL INSTRUCTIONS BEFORE USE

Read all instructions before using your NUTRI NINJA™ PRO

When using electrical appliances, basic safety precautions should always be followed, including the following:

WARNING

To reduce the risk of fire, electric shock, serious injury, death, or damage when using this appliance, follow these basic safety precautions.

1. Read all instructions prior to using the appliance and its accessories.
2. Carefully observe and follow all warnings and instructions. This unit contains electrical connections and moving parts that potentially present risk to the user.
3. **ALWAYS** exercise care when handling the Pro Extractor Blades™ Assembly. The blades are sharp. **ONLY** grasp the Pro Extractor Blades Assembly by the outer perimeter of the blade assembly base. Failure to use care when handling the blade assembly will result in a risk of laceration.
4. Take your time and exercise care during unpacking and appliance setup. This appliance contains sharp, loose blades that can cause injury if mishandled.
5. Take inventory of all contents to ensure you have all parts needed to properly and safely operate your appliance.
6. Turn the appliance OFF, then unplug the appliance from the outlet when not in use, before assembling or disassembling parts, and before cleaning. To unplug, grasp the plug by the body and pull from the outlet. **NEVER** unplug by grasping and pulling the flexible cord.
7. Before use, wash all parts that may contact food. Follow washing instructions covered in this instruction manual.
8. Blades are sharp. Handle carefully.
9. To protect against the risk of electric shock, **DO NOT** submerge the appliance or allow the power cord to contact any form of liquid.
10. **DO NOT** use this appliance outdoors. It is designed for indoor household use only.
11. **DO NOT** operate any appliance with a damaged cord or plug, or after the appliance malfunctions or is dropped or damaged in any manner. This appliance has no user-serviceable parts. If damaged, contact Ninja Kitchen for servicing.
12. **DO NOT** abuse the power cord. Never carry the appliance by the power cord or yank it to disconnect from electrical outlet; instead grasp the plug and pull to disconnect.
13. Extension cords should NOT be used with this appliance.
14. **DO NOT** allow children to operate this appliance or use as a toy. Close supervision is necessary when any appliance is used near children.
15. This appliance is NOT intended to be used by people with reduced physical, sensory, or mental capabilities, or lack of experience and knowledge, unless they are given supervision or instruction concerning use of the appliance by a person responsible for their safety.
16. Before each use, inspect blade assemblies for damage. If a blade is bent or damage is suspected, contact SharkNinja to arrange for replacement.
17. **DO NOT** attempt to sharpen blades.
18. Keep the appliance and its cord out of reach of children.
19. **DO NOT** allow the unit or the cord to hang over the edges of tables or counters. The cord may become snagged and pull the appliance off the work surface.
20. **DO NOT** allow any part of the unit to contact hot surfaces, including stoves and other heating appliances.

SAVE THESE INSTRUCTIONS

21. **ALWAYS** use the appliance on a dry and level surface.
22. **NEVER** place a blade assembly on the motor base without it first being attached to its corresponding container (bowl, pitcher, cup) and lid.
23. **ONLY** use attachments and accessories that are provided with the product or are recommended by Ninja Kitchen. The use of attachments not recommended or sold by Ninja Kitchen may cause fire, electric shock, or injury.
24. The use of attachments, including canning jars, not recommended by the manufacturer may cause a risk of injury to persons
25. **DO NOT** use stainless steel cup accessory model XSKDWSS24 with blender.
26. During operation and handling of the appliance, avoid contact with moving parts.
27. **DO NOT** operate the appliance with an empty container.
28. **DO NOT** fill containers past the MAX FILL or MAX LIQUID lines.
29. **DO NOT** microwave any containers or accessories provided with the appliance.
30. **DO NOT** perform grinding operations with the Single-Serve Blending Cup and Pro Extractor Blades™ Assembly.
31. Before operation, ensure all utensils are removed from containers. Failure to remove utensils can cause containers to shatter and potentially result in personal injury and property damage.
32. Keep hands, hair, clothing, as well as utensils out of container while processing to reduce the risk of severe injury to persons or damage to the appliance. A scraper may be used but only when the appliance is not running.
33. **NEVER** operate the appliance without lids and caps in place. **DO NOT** attempt to defeat the interlock mechanism. Ensure the container and lid are properly installed before operation.
34. **DO NOT** expose the containers and accessories to extreme temperature changes. They may experience damage.
35. **NEVER** leave the appliance unattended while in use.
36. **DO NOT** blend hot liquids. Doing so may result in pressure buildup and steam exposure that can pose a risk of the user being burned.
37. **DO NOT** remove the cup from the motor base while the appliance is running.
38. Remove the Pro Extractor Blades™ Assembly from the Nutri Ninja cup upon completion of blending. Do not store ingredients before or after blending them in the cup with the blade assembly attached. Some foods may contain active ingredients or release gases which will expand if left in a sealed container, resulting in excessive pressure buildup that can pose a risk of injury. For ingredient storage in the cup, use only spout lid to cover.
39. The maximum wattage rating for this appliance is based on the configuration of the Pro Extractor Blades Assembly and Single-Serve Blending Cup. Other configurations may draw less power or current.
40. Max ON time is 1 minute under 900W load. If the appliance overheats, a thermal switch will become activated and shut off the motor. To reset, unplug the appliance and let it cool down for approximately 30 minutes before using again.
41. **DO NOT** process dry ingredients without adding liquid to the Single Serve Blending Cup. The Single-Serve Blending Cup is not intended for dry blending.
42. To protect against electrical shock, do not submerge the appliance or allow the power cord to come into contact with water or any other liquid.
43. **DO NOT** spray the motor base with any liquids. Turn off and unplug the motor base before cleaning.
44. Keep the appliance and its cord out of reach of children.

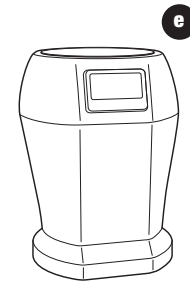
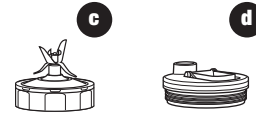
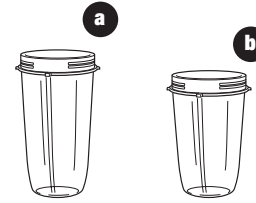
SAVE THESE INSTRUCTIONS

Contents

Thank you for purchasing the Nutri Ninja™ Pro Blender

Getting to Know Your Nutri Ninja Pro Blender	5
Before First Use	7
Use of the Nutri Ninja Cups.....	8
Suggested Uses.....	9
Care & Maintenance	10
Troubleshooting Guide.....	11

Getting To Know Your Nutri Ninja™ Pro Blender



- a 650 ml Nutri Ninja Cup
- b 500 ml Nutri Ninja Cup

- c Pro Extractor Blades™ Assembly
- d Spout Lid
- e Motor Base

THIS BOOK COVERS MODEL NUMBERS:

BL450SM

TECHNICAL SPECIFICATIONS

Voltage: 220-240V~, 50-60Hz

Power: 900 Watts

Nutri Ninja™ Cup Capacity: 500ml
650ml



The Nutri Ninja™ Pro Blender is a high powered innovative tool with a compact design and outstanding performance. It is perfect for ice crushing, chopping, blending, and nutrient and vitamin extraction*. Blend and go with the convenient Spout lids, create delicious drinks to get you out the door quickly! Best results are achieved when you Pulse.



FEATURES:

- Nutrient & Vitamin Extraction*
- 900 Watt Motor
- Personalised, healthy drinks and juices on the go
- Spout Lids for drinks on the go
- Nutri Ninja Cups, BPA free
- Cord storage

*Extract a nutritious drink containing vitamins and nutrients from fruits and vegetables.

Before First Use

PLEASE KEEP THESE IMPORTANT SAFEGUARDS IN MIND WHEN USING THE APPLIANCE:

IMPORTANT: Make sure that the motor base is plugged in for use.

IMPORTANT: DO NOT attempt to operate the appliance without the lid on.

IMPORTANT: Never run the appliance empty.

IMPORTANT: Appliance accessories are not intended to be used in the microwave as it may result in damage to the accessories.

⚠ CAUTION: Do not immerse the motor base into water or any other liquid.

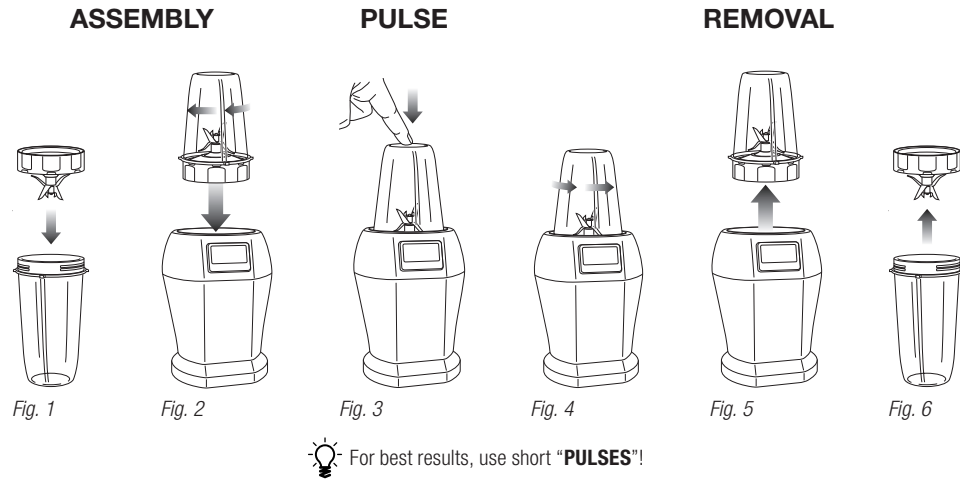
- 1 Remove all packaging material and labels from the appliance. Separate/remove all parts from each other.
- 2 Wash the lids, Nutri Ninja™ cups, Pro Extractor Blades™ Assembly in warm, soapy water. When washing the Pro Extractor Blades Assembly, use a dish-washing utensil with a handle to avoid direct hand contact with blades.

⚠ WARNING: Handle the Pro Extractor Blades Assembly with care when washing, as the blades are sharp.

- 3 Rinse and air dry thoroughly.
- 4 The lids, Nutri Ninja cups, Pro Extractor Blades Assembly are all dishwasher safe. It is recommended that the lids and Pro Extractor Blades Assembly be placed on the top rack. Ensure that the Pro Extractor Blades Assembly are removed from the containers before placing in the dishwasher.
- 5 Wipe the motor base clean with a damp cloth.

Use of the Nutri Ninja™ Cups

- ⚠ **WARNING:** Handle the Pro Extractor Blades™ Assembly with care, as the blades are sharp.
- ⚠ **WARNING:** Remove utensils prior to processing. Failure to remove may cause the Nutri Ninja cup to be damaged or to shatter, which may cause personal injury.
- ⚠ **WARNING:** Never leave the appliance unattended while in use.
- ⚠ **CAUTION:** Do not blend hot liquids, doing so may cause excessive pressure buildup, resulting in risk of the user being burned.
- ⚠ **CAUTION:** Remove the Pro Extractor Blades Assembly from the cup upon completion of blending. Do not store ingredients before or after blending in the Nutri Ninja™ cup with the blade assembly attached. Some foods may contain active ingredients or release gases which will expand if left in a sealed container, resulting in excessive pressure buildup that can pose a risk of injury. For storage, only use Spout Lid to cover.
- IMPORTANT:** Make sure that the motor base is plugged in for use.



- 1 Review warning and caution statements above before proceeding.
- 2 Place the motor base on a clean, dry, level surface such as a counter or table top.
- 3 Make sure that the motor base is plugged in for use.
- 4 Add ingredients to the cup.
 - NOTE:** Do not overfill! To avoid spilling, do not add ingredients past the "MAX" fill line.
- 5 Place the Pro Extractor Blades Assembly onto the cup and twist it on tightly until you have a good seal. **(Fig. 1)**
- 6 Turn the cup upside down and place it onto the motor base, aligning the tabs on the cup with the motor base. Turn it clockwise, the unit is ready for use. **(Fig. 2)**
- 7 Press down on the top of the cup in short intervals to activate. **(Fig. 3)**
- 8 When you have reached your desired consistency, stop the appliance by removing your hand from the cup.
- 9 To remove the cup, ensure that the motor has stopped running. Then turn the cup anticlockwise **(Fig. 4)** and pull straight up to remove. **(Fig. 5)**
- 10 Turn the cup upright and remove the Pro Extractor Blades Assembly by twisting the Pro Extractor Blades Assembly anticlockwise. **(Fig. 6)**
- 11 Do not store blended contents with the Pro Extractor Blades Assembly attached.
- 12 Place the Spout lid onto the Nutri Ninja cup, twist to seal and enjoy.
- 13 For storage, only use Spout lid to cover.
- 14 Be sure to store the Pro Extractor Blades Assembly attached to an empty cup when not in use.
- 15 Make sure that the motor base is unplugged when not in use.
- 16 To remove the motor base unit, tip the unit forward from the rear to easily disengage the suction cups.

Suggested Uses

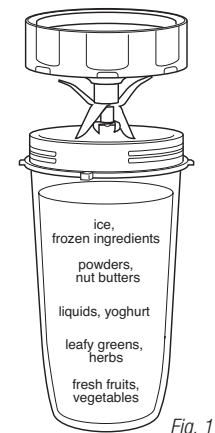
PURPOSE / FUNCTION	SUGGESTED CUP	TYPE OF FOOD
Chopping / Pulsing	500ml Nutri Ninja™ cup 650ml Nutri Ninja cup	Salsa Leafy Herbs Nuts Chocolate
Grating	500ml Nutri Ninja cup 650ml Nutri Ninja cup	Cheese Breadcrumbs
Mixing	500ml Nutri Ninja cup 650ml Nutri Ninja cup	Batters Dips
Sauces*	500ml Nutri Ninja cup 650ml Nutri Ninja cup	Vinaigrettes Salad Dressings Simple Sauces*
Frozen Blending	500ml Nutri Ninja cup 650ml Nutri Ninja cup	Ice Frozen Fruit Ice Cream
Nutrient Juices/Smoothies	500ml Nutri Ninja cup 650ml Nutri Ninja cup	Fruits Vegetables Leafy Greens

⚠ **CAUTION: DO NOT process dry ingredients without adding liquid to the cup. This product is not intended for dry blending.**

* When blending sauces, make sure they're cooled to room temperature first - Ninja™ containers are not intended for hot blending.

FILLING YOUR NUTRI NINJA™

Want to create smooth and delicious drinks using your Nutri Ninja cups? Simply add ingredients to the container in the order they appear in each recipe, or follow the guideline below when creating your own customised recipes. **(Fig. 1)**



Care & Maintenance

HOW TO CLEAN

⚠ CAUTION: Make sure that the motor base is unplugged from the power source before inserting or removing any attachment and before cleaning.

⚠ CAUTION: DO NOT immerse the motor base into water or any other liquid.

- 1 Separate/remove all parts from each other.
- 2 **Hand Washing:** Wash lids, Nutri Ninja™ cups and Pro Extractor Blades™ Assembly in warm, soapy water. When washing the Pro Extractor Blades Assembly, use a dish-washing utensil with a handle to avoid direct hand contact with blades. Handle Pro Extractor Blades Assembly with care to avoid contact with sharp edges. Rinse and air dry thoroughly.

Dishwasher: Containers, lids, and Pro Extractor Blades Assembly are all dishwasher safe. The lids and blade assemblies are top rack dishwasher safe. Ensure that the blade assemblies are removed from the containers before placing in the dishwasher.

⚠ WARNING: Handle the Pro Extractor Blades Assembly with care when washing, as the blades are sharp. Contact with the blades' edges can result in laceration.

- 3 Wipe the motor base clean with a damp cloth.
If the appliance needs servicing, please call customer service at SG +65 800 120 5111 or MY +60 1800 803 915.

HOW TO STORE

- 1 Store the Nutri Ninja Pro Blender upright with the blade assembly attached to the Nutri Ninja Cup. Do not place anything on top. Store the rest of the attachments in a safe place where they will not be damaged and won't cause harm. Loosely wrap the power cord around the cord wrap.

NOTE: Do not store blended or unblended ingredients in the Nutri Ninja cup with the blade assembly attached.

RESETTING THE MOTOR THERMOSTAT

The Nutri Ninja Pro Blender features a unique safety system which prevents damage to the unit's motor and drive system should you inadvertently overload your appliance. If the appliance is being overloaded, the motor will stop. To reset the appliance, follow the resetting procedure below:

- 1 Unplug the appliance from the electrical outlet.
- 2 Remove and empty the cup and ensure that no food is jamming the Pro Extractor Blades Assembly.
- 3 Allow the appliance to cool for approximately 30 minutes.
- 4 Re-install the cup onto the base and re-plug the appliance into the electrical outlet.
- 5 Proceed to use the appliance as before while making sure not to exceed the recommended maximum capacities.

Troubleshooting Guide

PROBLEMS	POSSIBLE REASONS & SOLUTIONS
Motor doesn't start or blade assembly doesn't rotate.	<ul style="list-style-type: none"> For the cups, make sure that the tabs are seated in the slots and turned clockwise.
Food is unevenly chopped.	<ul style="list-style-type: none"> Either you are chopping too much food at once, or you are not pulsing properly. Reduce the amount of food in the cup.
Food is too finely chopped or too watery.	<ul style="list-style-type: none"> The food has been over processed. Use short pulses for best results. Press down on the cup in short intervals.
You cannot achieve snow from ice cubes.	<ul style="list-style-type: none"> For best results use ice straight from the freezer. Try using short pulses instead of one long one. Make sure the cup is completely dry before adding ice.
Cup is leaking.	<ul style="list-style-type: none"> Make sure that your lid or blade assembly is properly assembled to the cup. Leaking may occur if it is misaligned when twisted onto the cup. Turn the lid tightly clockwise.
Unit doesn't turn on.	<ul style="list-style-type: none"> Make sure the unit is plugged in. Rotate and press down on the cup to turn the unit on. Make sure the blade assembly is properly assembled to the cup and that it is not misaligned.
Unit doesn't turn off.	<ul style="list-style-type: none"> Unplug the power cord from the electrical outlet and call customer service for support.
Doesn't mix well.	<ul style="list-style-type: none"> Pulse ingredients for best results. Press down on the cup in short intervals for even blending and chopping. For frozen ingredients, pulse in short intervals of 2-5 seconds and repeat.
Lid/blade assembly will not properly align to the cup.	<ul style="list-style-type: none"> Set the cup on a level surface. Place the lid or blade assembly on top of the cup and align the threads so that the lid/blades sit flat on the cup. Twist clockwise so that the lid/blades evenly align to the cup until you have a tight seal.



Proudly distributed by

Mann&Noble Asia Pte Ltd
600 North Bridge Rd.,
#23-01 Parkview Square, Singapore 188778

Illustrations may differ from actual product. We are constantly striving to improve our products, therefore the specifications contained herein are subject to change without notice.

NINJA, NUTRI NINJA, PRO EXTRACTOR BLADES, and SHARKNINJA, are trademarks of SharkNinja Operating LLC. is a trademark of SharkNinja Operating LLC.

For SharkNinja U.S. patent information, visit sharkninja.com/uspatents

© 2019 SharkNinja Operating LLC
PRINTED IN CHINA

BL450SM_Series_30_IB_Mv1