

## Datasheet

### Elite Anti-SARS-CoV-2 Spike (S2) Monoclonal Antibody, Clone COS2λ-3

Product Name	Elite Anti-SARS-CoV-2 Spike (S2) Monoclonal Antibody, Clone COS2λ-3
Catalogue Number	BSV-S2-03
Pack Size	25 µg (Sample Size)/0.1mg/1mg
Concentration	1 mg/mL
Clone, Isotype	COS2λ-3, IgG1 kappa
Format	IgG Monoclonal Antibody sterile in PBS
Tested Applications	Western Blot & ELISA
Additional Clones	COS2α-1, COS2β-2

#### Description:

Purified mouse monoclonal antibody (IgG) recognising the SARS-CoV-2 Spike Glycoprotein (S2), aa 685-1211 region of SARS-CoV-2.

#### Product Details:

**Origin:** SARS-CoV-2 Spike Glycoprotein (S2) (HEK293), aa 685-1211

**Immunogen:** Full-Length S2 Spike protein region (F/L S2)

**Purification:** Protein G

**Host:** Mouse

**Fusion partner:** SP2/0 Mouse Myeloma

**Formulation:** 1mg/ml, sterile in PBS, pH 7.4

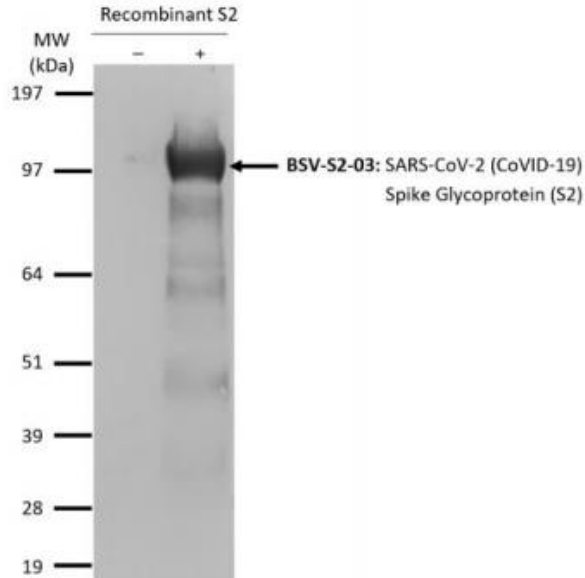
**Shipping:** 4°C

**Storage:** -20°C to -80°C. Avoid repeated freezing and thawing.

**Production Capacity:** 10's grammes / month

Would you like to receive further information?  
Please contact:

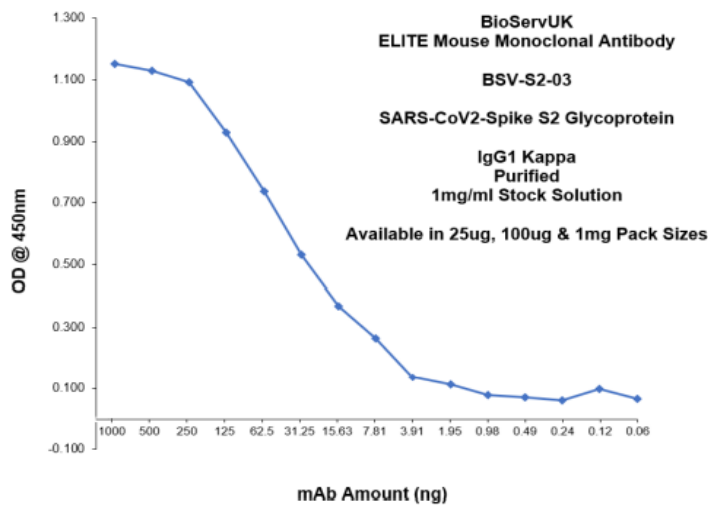
## Applications



### BSV-S2-03 Western Blot Image

Recombinant S2 protein (2 $\mu$ g) from COVID-19 (produced in HEK293 T cells) were separated by 10% SDS-PAGE, and the membrane was blotted with BSV-S2-03 Elite Anti-SARS-CoV-2 (COVID-19) Spike Glycoprotein (S2) antibody diluted at 1:500 from a 1mg/ml sample. The alkaline phosphatase conjugated anti-mouse IgG antibody diluted at 1:2000 was used to detect the primary antibody.

**Dilution used:** 1:500



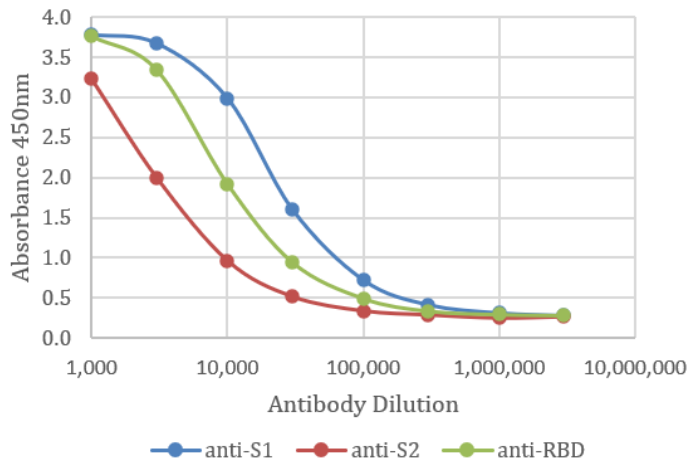
### BSV-S2-03 ELISA: Titration

ELISA showing binding of antibody BSV-S2-03 to immobilized SARS-CoV-2 Spike S2 Glycoprotein. Goat Anti-Mouse IgG (Fc specific)-HRP antibody diluted at 1:2000 was used to detect the primary antibody.

**BSV-S2-03 LoD:** <10ng SARS-CoV-2 Spike S2 Glycoprotein

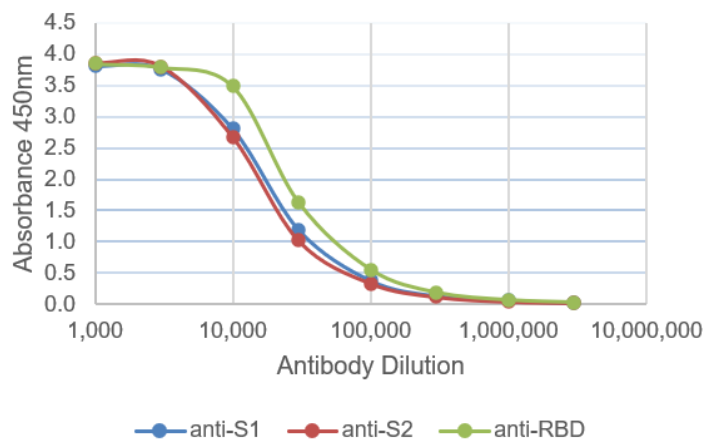
Would you like to receive further information?  
Please contact:

Trimeric Spike Antigen – the only Native, Wild-type Trimeric SARS-CoV-2 Spike Antigen on the market (BSV-COV-PR-32). It has the potential to screen against a range of related Human Coronavirus proteins (OC43, 229E, NL63, HKU1 etc).



### Elite SARS-CoV-2 Antibodies ELISA

Elite Anti-SARS-CoV-2 Spike (S2) Monoclonal Antibody (BSV-S2-03) binding to Trimeric Spike Antigen (BSV-COV-PR-32) (2µg/mL diluted in HEPES/NaCl/LMNG, Maxisorp ELISA Plates)



### Elite SARS-CoV-2 Antibodies ELISA

Elite Anti-SARS-CoV-2 Spike (S2) Monoclonal Antibody (BSV-S2-03) binding to Trimeric Spike Antigen (BSV-COV-PR-32) (2µg/mL diluted in Bicarbonate pH 9.6, Maxisorp ELISA Plates)

Would you like to receive further information?  
Please contact: