

Datasheet

Elite Anti-SARS-CoV-2 Spike (S2) Monoclonal Antibody, Clone COS2 α -1

Product Name	Elite Anti-SARS-CoV-2 Spike (S2) Monoclonal Antibody, Clone COS2 α -1
Catalogue Number	BSV-S2-01
Pack Size	25 μ g (Sample Size)/0.1mg/1mg
Concentration	1 mg/mL
Clone, Isotype	COS2 α -1, IgG1 kappa
Format	IgG Monoclonal Antibody sterile in PBS
Tested Applications	Western Blot & ELISA
Additional Clones	COS2 β -2, COS2 λ -3

Description:

Purified mouse monoclonal antibody (IgG) recognising the SARS-CoV-2 Spike Glycoprotein (S2), aa 685-1211 region of SARS-CoV-2.

Product Details:

Origin: SARS-CoV-2 Spike Glycoprotein (S2) (HEK293), aa 685-1211

Immunogen: Full-Length S2 Spike protein region (F/L S2)

Purification: Protein G

Host: Mouse

Fusion partner: SP2/0 Mouse Myeloma

Formulation: 1mg/ml, sterile in PBS, pH 7.4

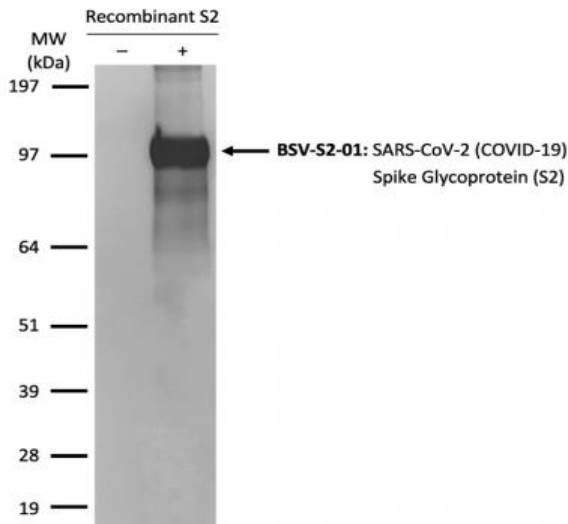
Shipping: 4°C

Storage: -20°C to -80°C. Avoid repeated freezing and thawing.

Production Capacity: 10's grammes / month

Would you like to receive further information?
Please contact:

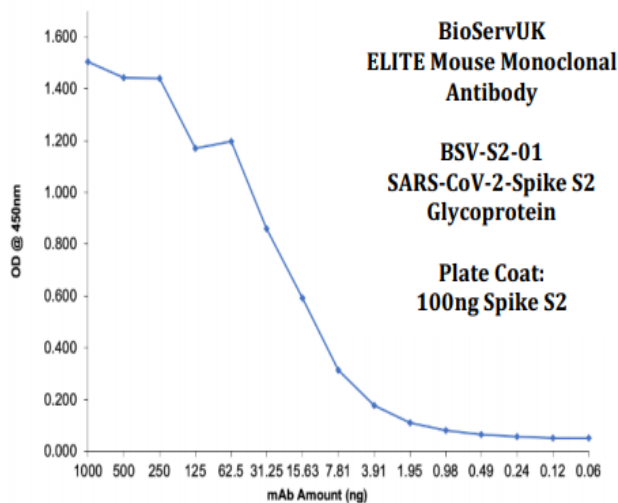
Applications



BSV-S2-01 Western Blot Image

Recombinant S2 protein (2 μ g) from COVID-19 (produced in HEK293 T cells) were separated by 10% SDS-PAGE, and the membrane was blotted with BSV-S2-01 Elite Anti-SARS-CoV-2 (COVID-19) Spike Glycoprotein (S2) antibody diluted at 1:500 from a 1mg/ml sample. The alkaline phosphatase conjugated anti-mouse IgG antibody diluted at 1:2000 was used to detect the primary antibody.

Dilution used: 1:500



BSV-S2-01 ELISA: Titration

ELISA showing binding of antibody BSV-S2-01 to immobilized SARS-CoV-2 Spike S2 Glycoprotein. Goat Anti-Mouse IgG (Fc specific)-HRP antibody diluted at 1:2000 was used to detect the primary antibody.

BSV-S2-01 LoD: <10ng SARS-CoV-2 Spike S2 Glycoprotein

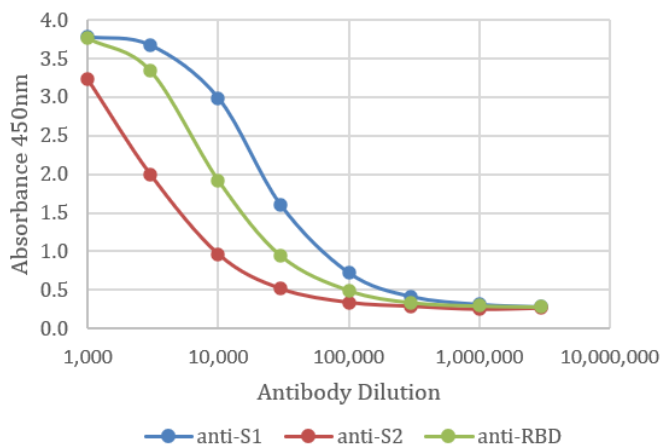
Would you like to receive further information?
Please contact:

Final Subclone	S1	CCHF	SARS	RBD	MERS	S2	Nucleo
BSV-S2-01	0.0774	0.0552	0.078	0.059	0.104	1.958	0.1136

BSV-S2-01 ELISA: Specificity

ELISA showing specificity of antibody BSV-S2-01 to immobilized SARS-CoV-2 Spike S2 Glycoprotein. SARS-CoV-2 Spike S1 Glycoprotein, SARS-CoV-2 Spike Glycoprotein S1 Receptor Binding Domain (S1-RBD) and SARS-CoV-2 Nucleocapsid protein were not detected. Related proteins, MERS Spike Glycoprotein (S1) and SARS Spike Glycoprotein (S1), were not detected along with unrelated CCHF Gc Protein. Goat Anti-Mouse IgG (Fc specific)-HRP antibody diluted at 1:2000 was used to detect the primary antibody.

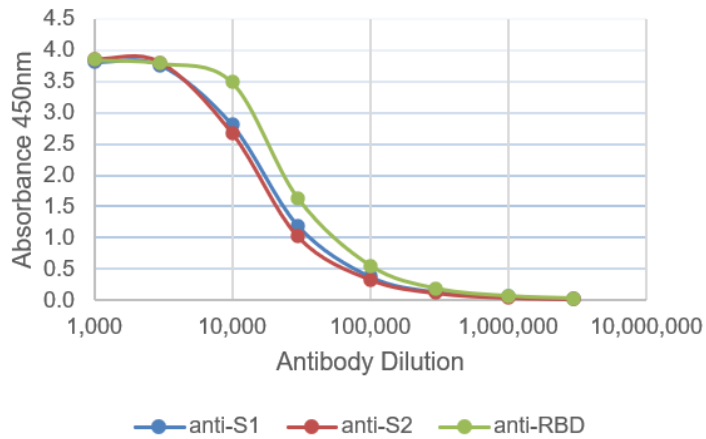
Trimeric Spike Antigen – the only Native, Wild-type Trimeric SARS-CoV-2 Spike Antigen on the market (BSV-COV-PR-32). It has the potential to screen against a range of related Human Coronavirus proteins (OC43, 229E, NL63, HKU1 etc).



Elite SARS-CoV-2 Antibodies ELISA

Elite Anti-SARS-CoV-2 Spike (S2) Monoclonal Antibody (BSV-S2-01) binding to Trimeric Spike Antigen (BSV-COV-PR-32) (2µg/mL diluted in HEPES/NaCl/LMNG, Maxisorp ELISA Plates)

Would you like to receive further information?
Please contact:



Elite SARS-CoV-2 Antibodies ELISA

Elite Anti-SARS-CoV-2 Spike (S2) Monoclonal Antibody (BSV-S2-01) binding to Trimeric Spike Antigen (BSV-COV-PR-32) (2 μ g/mL diluted in Bicarbonate pH 9.6, Maxisorp ELISA Plates)

Would you like to receive further information?
Please contact: