

Datasheet

Elite Anti-SARS-CoV-2 Nucleocapsid Protein Monoclonal Antibody, Clone CON β -2

Product Name	Elite Anti-SARS-CoV-2 Nucleocapsid Protein Monoclonal Antibody, Clone CON β -2
Catalogue Number	BSV-N-02
Pack Size	25 μ g (Sample Size)/0.1mg/1mg
Concentration	2 mg/mL
Clone, Isotype	CON β -2, IgG1 kappa
Format	IgG Monoclonal Antibody sterile in PBS
Tested Applications	Western Blot & ELISA
Additional Clones	CON α -1, CON γ -3, CON δ -4, CON ϵ -5

Description:

Purified mouse monoclonal antibody (IgG) recognising the SARS-CoV-2 Nucleocapsid Protein (N), aa 1-419 region of SARS-CoV-2.

Product Details:

Origin: SARS-CoV-2 Nucleocapsid Protein (N) His-Tag (E. coli), aa 1-419

Immunogen: Full-Length Nucleocapsid protein region (F/LN Protein)

Purification: Protein G

Host: Mouse

Fusion partner: SP2/0 Mouse Myeloma

Formulation: 2 mg/ml, sterile in PBS, pH 7.4

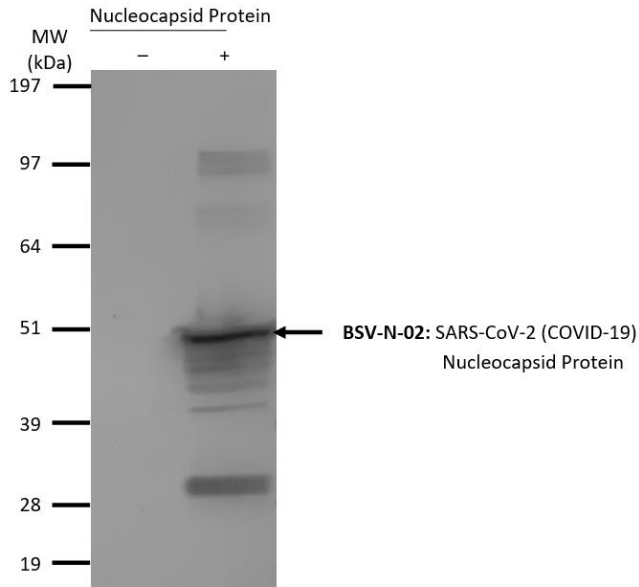
Shipping: 4°C

Storage: -20°C to -80°C. Avoid repeated freezing and thawing.

Production Capacity: 10's grammes / month

Would you like to receive further information?
Please contact:

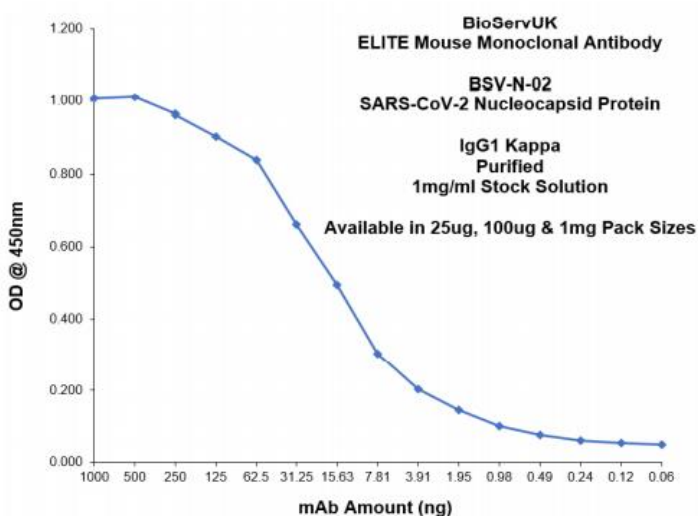
Applications



BSV-N-02 Western Blot Image

Full-length Nucleocapsid Protein (2 μ g) from COVID-19 (produced in *E. coli*) were separated by 10% SDS-PAGE, and the membrane was blotted with BSV-N-02 Elite Anti-SARS-CoV-2 (COVID-19) Nucleocapsid Protein (N) antibody diluted at 1:500 from a 1mg/ml sample. The alkaline phosphatase conjugated anti-mouse IgG antibody diluted at 1:2000 was used to detect the primary antibody.

Dilution used: 1:500



BSV-N-02 ELISA: Titration

ELISA showing binding of antibody BSV-N-02 to immobilized SARS-CoV-2 Nucleocapsid Protein. Goat Anti-Mouse IgG (Fc specific)-HRP antibody diluted at 1:2000 was used to detect the primary antibody.

BSV-N-02 LoD: <10ng SARS-CoV-2 Nucleocapsid Protein

Would you like to receive further information?
Please contact: