

Touchless Hand Sanitizer Dispenser



stand type



wall mounted type

- UV Disinfection with Green LED Indicator
- Lightweight one person installation on pole or wall
- Housing material: ABS
- Sensor with Red LED blockage Indicator
- Red LED also for low power
- Operates with Batteries



Description of hand sanitizer gel dispenser with tray/stand



stand type



wall mounted type



Tray



Aluminium pole



3PCS fix together

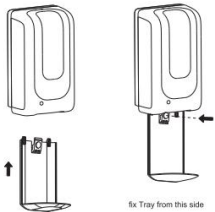


Metal base



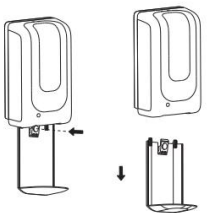
Installation

TRAY INSTALLATION



fix Tray from this side

A Installation

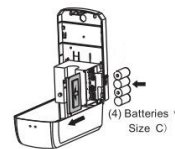


press the circle button to take out tray

B Take out Tray



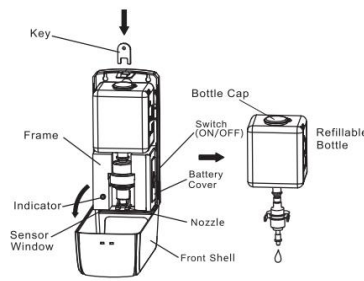
Packing List



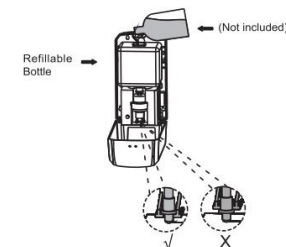
(4) Batteries * Size C

* The package does not include batteries

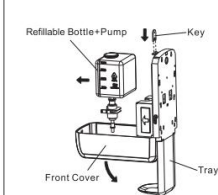
C Install (4) size C batteries



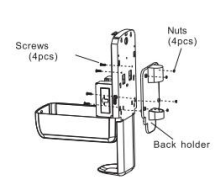
Part Names



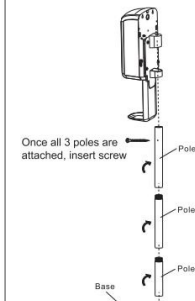
D Fill refillable bottle and ensure the pump is correctly positioned.



A Open the dispenser with the key, then carefully remove the refillable bottle.

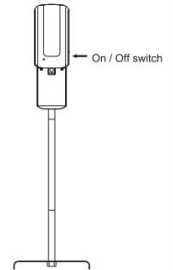


B Use the (4) screws and (4) nuts to attach the back holder to the dispenser - See above for reference.



Once all 3 poles are attached, insert screw

E Install Pole and Base.



* If the light is flashing red, either the battery is low or the sensor is blocked

F Flip down the switch and sanitize.