



IBX BOOST™

PERFECTION OVER THE TOP




FAMOUS NAMES PRODUCTS
PROUDLY PRESENTS

IBX BOOST™



TABLE OF CONTENTS

- 1 Why IBX BOOST?
- 2 What makes IBX BOOST Different?
-  3 Application & Removal of IBX BOOST
- 4 Marketing IBX BOOST
- 5 Other Products Offered By Famous Names Products



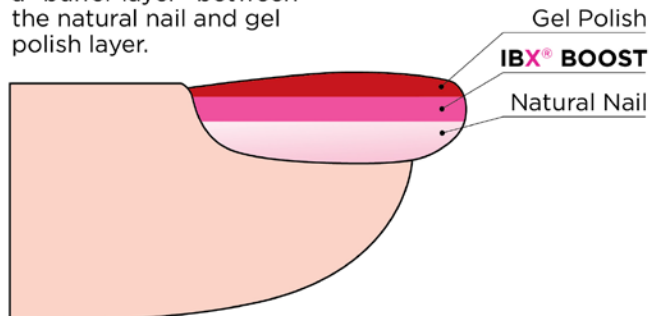
1

Why IBX BOOST?

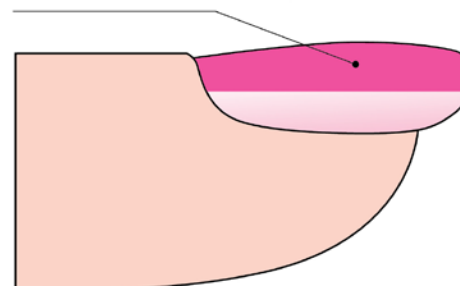


- IBX BOOST is a **FLEXIBLE** and **STRONG** over the top **UNIVERSAL** nail coating.
- IBX BOOST functions as a "buffer layer" between the natural nail, gel polish, soak off and hard gels.
- IBX BOOST can be used as a natural nail overlay to protect and allow growth.
- IBX BOOST is HEMA Free.

IBX® BOOST functions as a "buffer layer" between the natural nail and gel polish layer.

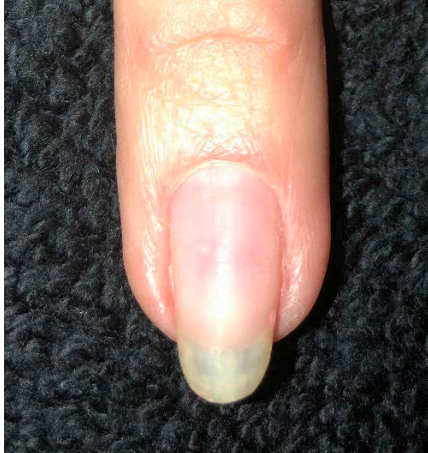


IBX® BOOST is a **FLEXIBLE** and **STRONG** over the top **UNIVERSAL** nail coating.



1

Why IBX BOOST?



BENEFITS TO YOU AND YOUR CUSTOMER

- Easy to apply with amazing retention properties
- Requires no buffing on the natural nail prior to application
- Cures in one minute LED or UV
- Rebalances are easy, saving you time!



2

Why Is IBX BOOST Different?

- Coating Gels are typically a blend of oligomers, monomers and photo initiators. All three components are necessary for a successful system.
- IBX BOOST has **more oligomers** and fewer **monomers** than other products on the market.
- Why is this important?

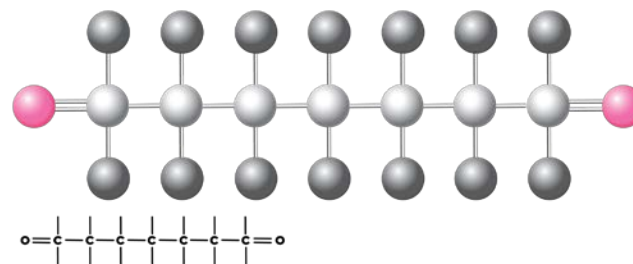


2

Why Is
IBX BOOST
Different?

OLIGOMERS

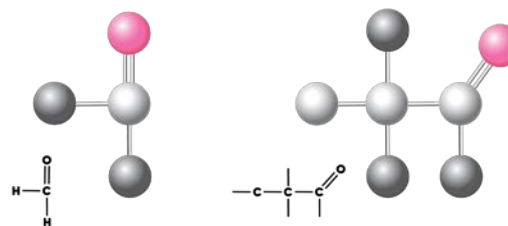
Oligomers have long chains and two reaction sites



MONOMERS

Monomers are much smaller, each has a reaction site,

so they are **more** reactive molecules.



IBX BOOST HAS A MORE BALANCED NUMBER OF REACTION SITES

Example:



Monomers are like matches



Oligomers are like lighters



2

Why Is
IBX BOOST
Different?

IBX BOOST HAS THE PERFECT BALANCE OF
OLIGOMERS AND MONOMERS
MEANING A MORE CONTROLLED CURE

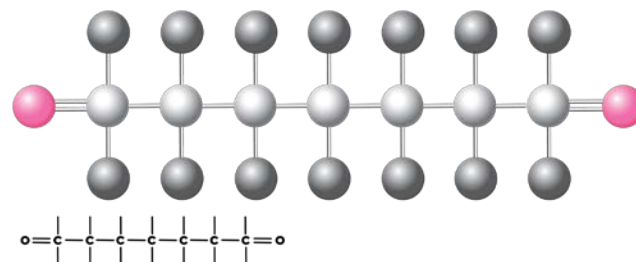
- 1 More complete cure
IBX BOOST 90% +
Others are as low as 50%

- 2 Less Shrinkage

- 3 Less Exotherm



- 4 Less Allergic Reactions



2

Why Is
IBX BOOST
Different?

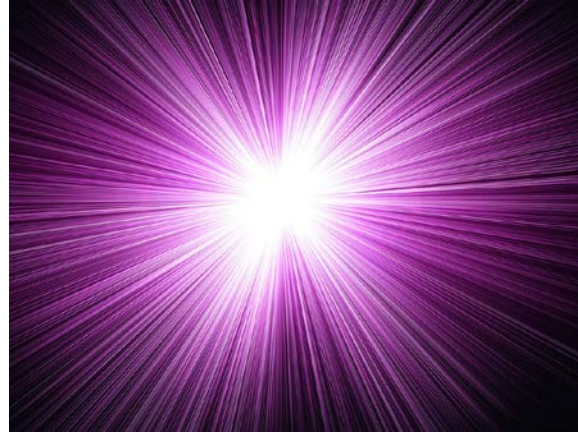
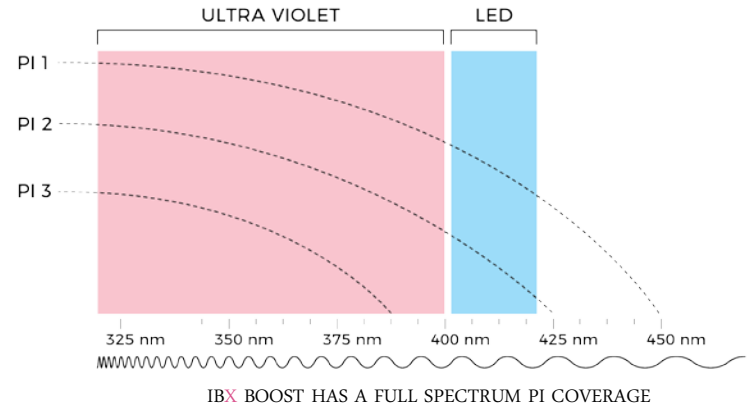


PHOTO INITIATORS (PI)

- 1 Are Expensive!
- 2 Are designed to cure in two ranges:
 - LED (Light Emitting Diode) 405 nm
 - UV (Ultra Violet) 365 nm
- 3 IBX BOOST utilizes a blend of Photo Initiators which cure in both the LED and UV Ranges (much like IBX)



THE PRODUCTS OF THE IBX
BOOST SYSTEM

IBX BOOST BASE COAT 15 mL / .5 fl oz

IBX BOOST GEL 16.5g / .5 oz

IBX BOOST HIGH SHINE TOP COAT 15 mL / .5 fl oz

IBX BOOST™
PERFECTION OVER THE TOP



2

Why Is
IBX BOOST
Different?

IBX BOOST BASE WHY IS IT BETTER & DIFFERENT?

IT'S NOT TOO HARD

IT'S NOT TOO SOFT

IT'S JUST RIGHT!



- Durability of a harder gel and flexibility of a softer gel = long lasting AND soak off.
- Contains a blend of superior adhesion agents.
- Contains the best filler components for smoothness and ridge filling capabilities.
- Interacts with the keratin in the top layers of the nail = great adhesion, but no damage.



2

Why Is
IBX BOOST
Different?

IBX BOOST HIGH SHINE TOP COAT WHY IS IT BETTER & DIFFERENT?

HAS A SHINE THAT LASTS!

STAIN RESISTANT

EASY TO APPLY



- Glass surface.
- 3-week wear.
- Crack and lift resistance in cold weather.
- Resistance to heat spikes and shrinkage.
- Aids in nail growth.



Before
We
Begin...

3

Application of
IBX BOOST



THE CURING LAMP

- Is your lamp under two years old?
- Did you know as an LED lamp approaches its end of life, the output can fall as much as 50%.
- Does your lamps output exceed 30 watts?
- If you are uncertain about your curing lamp, we recommend double curing. Shift the finger position on the second cure.
- To insure completeness of cure, two thinner coats of IBX BOOST GEL are better than one.



3

Application of
IBX BOOST



ADDITIONAL CONSIDERATIONS

- 1 No pre-buffing the natural nail is needed or recommended.
- 2 Always cap the free edge.
- 3 Two thin layers are better than one thick one to ensure completeness of cure.
- 4 Use a 90% or higher IPA (the balance is water).
- 5 Always cure IBX BOOST BASE and IBX BOOST GEL for one full minute.



3

Application of IBX BOOST



IBX BOOST GEL APPLICATION

- 1 a. Shape the free edge.
 - b. Gently push back cuticles making sure there is no cuticle left on the nail plate.
 - c. Cleanse nails with Cinnatize scrubbing the nail plate.
- 2 Avoiding contact with the skin, apply an **extremely thin** coat of IBX BOOST Base using a scrubbing motion and light pressure to work the product into the nail plate and cap the free edge.
- 3 Cure in a UV or LED lamp for one minute. Do not cleanse.
- 4 Apply a **THIN** coat of IBX BOOST Gel to the nail plate and glide the product over the entire nail (just like nail polish), capping the free edge. Allow the product to self level.
- 5 Cure in a UV or LED lamp for one minute.
- 6 We recommend a second **THIN** coat of IBX BOOST Gel applied the same as the first. Do not cleanse before this coat.

- 7 For a natural look finish your service with IBX BOOST HIGH SHINE TOP COAT and cleanse with 90% IPA. IBX BOOST can also be applied under gel polish, soak-off and hard gels.

If no smoothing required:

Apply gel polish/gel directly over the sticky layer as you always do, finish with with IBX BOOST HIGH SHINE TOP COAT and cleanse with 90%+ IPA.

If smoothing required:

Remove sticky layer with 90%+ IPA. Lightly buff the shine, apply gel polish or gel as you always do, finish with IBX BOOST HIGH SHINE TOP COAT and cleanse with 90%+IPA.



3

Removal of IBX BOOST



IBX BOOST REMOVAL

REMOVE IBX BOOST GEL ONLY

- 1 Break the seal with a gentle file.
- 2 Using your preferred acetone based remover, either soak or tightly wrap each finger for approximately 15 minutes.
- 3 Gently slide off any remaining product with an orangewood stick making sure to remove in the direction of the nail growth only.

REMOVE GEL POLISH, SOAK OFF & HARD GELS

- 1 First you will need to remove your gel polish, soak off or hard gels by either soaking or e-filing down to IBX BOOST Gel.
- 2 You have the option now to rebalance your IBX BOOST Gel and then re apply your gel polish, soak off or hard gels.
- 3 Once removing your gel polish, soak off or hard gel – you will then need to:
 - a. Break the seal with a gentle file.
 - b. Using your preferred acetone based remover, either soak or tightly wrap each finger for approximately 15 minutes.
 - c. Gently slide off any remaining product with an orangewood stick making sure to remove in the direction of the nail growth only.



3

Application of
IBX BOOST



IBX BOOST GEL RE-BALANCE INSTRUCTIONS

Start with a dry manicure so the cuticle is cleaned up and off the nail plate.

- 1 Lightly blend the contact area of the existing IBX BOOST.
- 2 Cleanse the new growth area with Cinnatize.
- 3 If needed, apply your IBX treatment to the new nail growth area.
- 4 Avoiding contact with the skin, apply an **extremely thin** coat of IBX BOOST Base to the regrowth area using a scrubbing motion and light pressure to work the product into the nail plate. The use of disposable micro applicators makes it easy to apply thinly.
- 5 Cure in a UV or LED lamp for one minute.
- 6 Apply a **THIN** coat of IBX BOOST Gel to the nail plate and glide the product over the entire nail just like nail polish.

7 Cure in a UV or LED lamp for one minute.

- 8 We recommend a second thin coat of IBX BOOST applied the same as the first. Do not cleanse before this coat.
- 9 For a natural look finish your service with IBX BOOST BOOST HIGH SHINE TOP COAT and cleanse with 90% IPA. IBX BOOST can also be applied under gel polish, soak-off and hard gels.

If no smoothing required:

Apply gel polish/gel directly over the sticky layer as you always do, finish with with IBX BOOST HIGH SHINE TOP COAT and cleanse with 90%+ IPA.

If smoothing required:

Remove sticky layer with 90%+ IPA. Lightly buff the shine, apply gel polish or gel as you always do, finish with with IBX BOOST HIGH SHINE TOP COAT and cleanse with 90%+IPA.



4

Marketing
IBX BOOST



MARKET IBX AND IBX BOOST AS THE PERFECT NATURAL NAIL SUPPORT SYSTEM

- Add Dadi'Oil and Luxury Dadi' Lotion to complete the service.
- IBX and IBX BOOST only add 15 minutes to your gel polish service or your natural nail manicure and adds additional income.
- IBX BOOST Base gets approximately 100 full set applications.
- IBX BOOST Gel gets approximately 40-50 full set applications.
- Use IBX BOOST to bring back gel polish customers who could no longer wear it.
- IBX Boost is for that Natural Nail client that needs more than just IBX.



“

It makes my clients happy because they can have their own nails using IBX and IBX BOOST and with the support of IBX BOOST it allows them to have healthy nails and some length.

”

Maureen

“

Let me explain – if a product can sit pain free on my sensitive nail plates then it's worth much more for the salon.

”

Tracy

“

To promote healthy nail growth with IBX, IBX BOOST is perfect.

”

I love this product for toe nail correction.

Mirka



5

Other Products Offered By
Famous Names Products

- CB-Dadi' Oil
- Dadi' Oil
- Luxury Dadi' Lotion
- IBX REPAIR
- IBX STRENGTHEN
- Dadi' Lip Balm
- Dadi Scrub
- Cinnatize



We Are Social

Sign up for updates on our website

FamousNamesProducts.com



[Facebook.com/FamousNamesProducts](https://www.facebook.com/FamousNamesProducts)



[@Famous__Names](https://www.instagram.com/@Famous__Names)



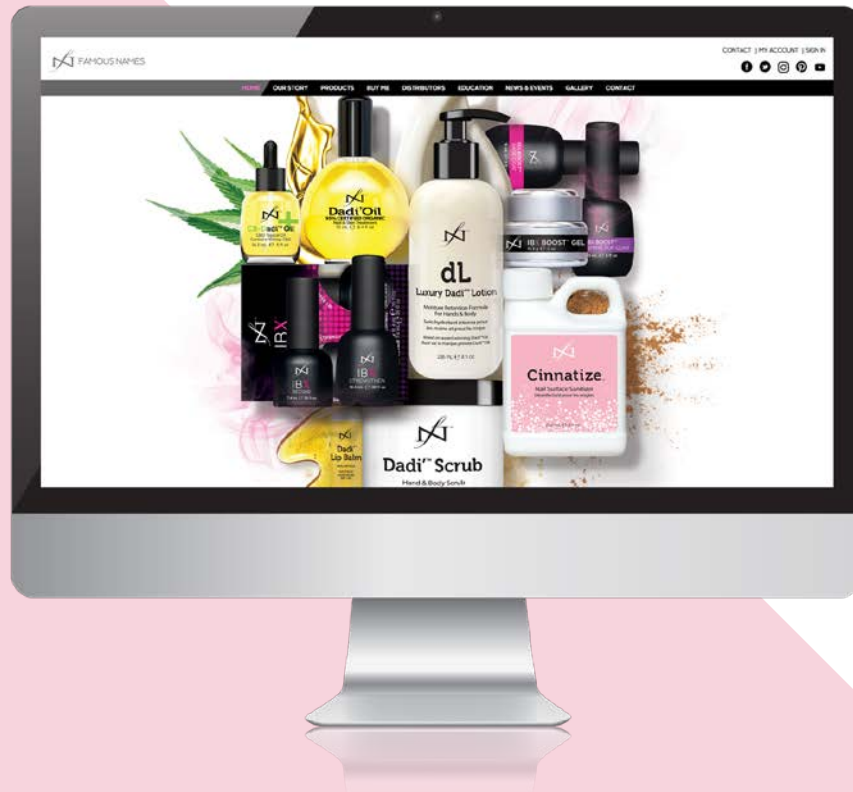
[@FamousNames](https://www.twitter.com/@FamousNames)



[Pinterest.com/FamousNamesLLC](https://www.pinterest.com/FamousNamesLLC)



Thank You!



FAMOUSNAMEPRODUCTS.COM

